

ORDER NOW

# 8-Hour NMLS CE

## How does it work?

### 1 Course structure

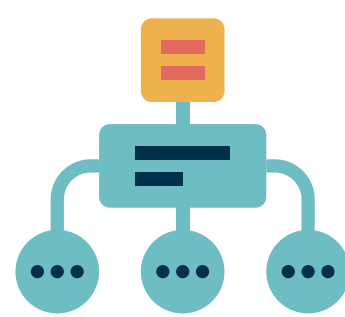
first tuesday's 8-hour NMLS CE courses contain:

- 3 hours of federal law and regulations;
- 2 hours of ethics, consumer protection and fraud;
- 2 hours of nontraditional lending; and
- 1 hour of elective material.

The course has 8 1-hour modules. Each module has a 5-question quiz. At the end of the 8 modules, you take a 25-question exam.

first tuesday's 8-hour NMLS CE course is completed online. **We are BioSig compliant.**

**Successive years rule compliant.** Our system won't let you repeat the same material two years in a row.



**Q:** How do I know I won't repeat the same content I took last year?

**A:** We alternate our courses every year, and don't license our materials to other schools.

### 2 Order your course

Choose your NMLS CE course:

- a. Take the **on-time CE** if you have a current MLO endorsement.
- b. Take the **late CE** if you're making up CE to reacquire your endorsement after it lapsed.

**The \$49.50 price includes the \$12.00 NMLS banking fee.**



**Go to [firsttuesday.us](https://www.firsttuesday.us)**  
Order online 24/7



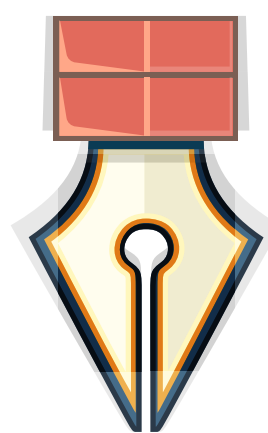
**Call 951.781.7300**  
Order by phone  
Mon. - Fri., 8:30 AM to 5:00 PM PST



Still not sure which you need to take? Contact the NMLS Call Center at 855.665.7123.

### 3 BioSig authentication

NMLS requires you create a BioSig-ID and authenticate your identity each time you log in to your course, and at designated checkpoints. Your BioSig-ID is a 4-character code that you will choose. When prompted during your course, you'll draw the code with a mouse or touchpad. If you forget your BioSig-ID, you'll be prompted to reset it.



### 4 Read your materials

Modules contain several units, with individually timed pages. You must review each page for the minimum amount of time before you may proceed to the next page.

You may log out and save your progress as you read. When you log back in, you'll be able to pick up where you left off.



If you're inactive for more than 6 minutes, you'll be logged out and returned to the start of the unit, **per NMLS regulations.**



**Q:** Will you let me know when I'm about to be logged out?

**A:** NMLS regs don't allow us to alert you before you're logged out for inactivity. If you have to step away or take a call, save first!

### 5 Take the quizzes



Module quizzes are open book. The passing score is 70%. Questions are randomized. Take the quizzes multiple times to study.

8 sets of quizzes  
5 questions each  
no time limit

### 6 Take the exam



The exam is open book. The passing score is 70%. Questions are randomized. If you fail the exam 4 times, you have to wait 24 hours to retest.

1 exam  
25 questions  
20-minute time limit

### 7 Renew your license

Upon completion, **first tuesday** will report your course completion to NMLS. To attest and pay your fees, log into the NMLS system.



ORDER NOW